

Draft Heritage Data Form

Blue Mountains Heritage 2016

ITEM DETAILS						
Name of Item	Woodford Memorial Park Group (Local ID: WD010)					
Other Name/s Former Name/s	R55 Crown Reserve, Wilson Park, Woodford Recreation Reserve(?)					
Item type (if known)	Landscape, built and archaeological					
Item group (if known)	Recreation, Monuments, Memorials, Railway and Footbridge					
Item category (if known)	Public Reserve					
Area, Group, or Collection Name	Woodford Memorial Park Group					
Street number	70, 70A, 75A, Rail Corridor, Railway Parade					
Street name	Great Western Highway					
Suburb/town	Woodford				Postcode	2778
Local Government Area/s	Blue Mountains City Council					
Property description	Lot 7008 DP1127690, Lot 1 DP816624, Lot 2 DP816624, Part Reserve R55, Rail Corridor Lot3007 DP1204241 and Railway Parade, Woodford					
Location description						
Location - Lat/long	Latitude				Longitude	
Location – MGA94 (if no street address) [or AMG66 if old system]	Zone		Easting		Northing	
Owner	Blue Mountains City Council and State Government (Railcorp)					
Current use	Public Reserve, Railway Land, Crown Land, Road Reserve					
Former Use	Public Reserve, park and gardens, railway residences					
Statement of significance	<p>Woodford Memorial Park group is a small but significant c1919 Park established in the historic centre of Woodford on the Great Western Highway, initiated and largely implemented by the efforts and finances of the local community with the full support of Blue Mountains Shire Council. It has high local historic, associational and social significance. The railway footbridge may also have some rarity values.</p> <p>The Park and Gardens, the Soldier's Memorial and the railway footbridge illustrate that positive community building outcomes can be achieved by small groups if well supported by residents and Council. Concurrent with the project to establish the Park the community linked the Park to the Reserve on the southern side of the railway line and carried out extensive tree planting in the village area generally. The Park transformed a disused rocky strip of land between the Bathurst Road and the railway line into an attractive civic garden and provided an entry and link to the Reserve to the south later to become Wilson Glen. The interconnectedness is reinforced by the sandstone character and design of the Soldier's Memorial in the Memorial Park and the later sandstone shelter at the head of the walking track to the south.</p> <p>The village of Woodford in the early 20th C attracted a number of affluent and well-connected residents</p>					

Draft Heritage Data Form

Blue Mountains Heritage 2016

	<p>from Sydney. The Park and its elements have high associational significance through the involvement of key local and regional figures then residents in Woodford and the locality including Gustavus Waterhouse, Hon Eric Bowden Federal Member and Minister of Defence 1923-25, Sir Edgeworth David and Shire President Percy Wilson. Another significant dimension to the local significance of the Park is its associated railway heritage which includes the siting of the third railway platform at Woodford. The first, also known as Buss's Platform, with added associations to Woodford Academy (WD001) was located to the west of Memorial Park (adjacent to Academy Park), the second was located to the west of Park Road bridge and the third was located behind Memorial Park in 1880 (ref London Illustrated News woodblock print and coloured mural in existing Woodford Station (copy attached). The former station master's residence and railway cottages built by 1912 are also part of the Park's associated railway history. There appears to have also been an at-grade rail crossing at the location of this third railway platform. Memorial Park was also the siting of the overhead footbridge in 1920. The archaeology of the residence and cottage elements has recently been interpreted on site as part of the recent highway upgrade works. It is possible that some archaeology remains of the third platform. The original railway footbridge was funded by the community and Council but later replaced by SRA due to electrification of the mainline in the mid 1950s. The pedestrian footbridge not only marks an important historical past use as the site of Woodford's early railway stations but also provides an essential link between the park and the reserves to the south which was part of the grand vision of those, such as Waterhouse in the early 1900s, to bring the unique Blue Mountains natural reserves to the local community.</p> <p>Refer also to associated SHI 1173067 Wilson Glen and Adjacent Reserves, 26-50 Railway Parade which notes in its statement of significance "The Wilson Glen and adjacent reserves have local historical significance as a typical example of a group of central Blue Mountains Crown Reserves, augmented with land donations by private individuals, that was developed with a functional network of tourist tracks and picnic facilities to access its natural attractions ... The first recreation reserve gazetted in south Woodford was R52237-8, on Portion 34, notified on 25 May 1917. A footbridge was erected in 1920 between the Woodford Soldier's Memorial Park reserve north of the railway line and Portion 28 on the southern side. It was stated that this bridge was intended to provide access to the Recreation Reserve (Anon., 1920). The Wilson Glen Track was opened on 27 May 1933, one of only 11 tracks that had formal opening ceremonies".</p>	
Level of Significance	State <input type="checkbox"/>	Local <input checked="" type="checkbox"/>

DESCRIPTION	
Designer	Various
Builder/ maker	Woodford Memorial – Thomas Thomas builder
Physical Description	<p>The heritage listing comprises the following inter-related elements:</p> <ul style="list-style-type: none"> Woodford Memorial Park and Shelter Woodford Railway Footbridge Woodford Soldier's Memorial Site of Former Station Master's Residence and Railway Cottages Site of Former Woodford station platform sites (ref associated elements noted below) Rock engravings <p>Associated elements beyond the property curtilage and in the vicinity:</p> <ul style="list-style-type: none"> Wilson Glen, Shelter and Walking Tracks Woodford Methodist Church and Parsonage Site of first Woodford station platform (opposite Buss's Inn / Woodford Academy) Site of second Woodford station platform (western end of Memorial Park) Site of third Woodford station platform (central to Memorial Park behind the sites of the

Draft Heritage Data Form

Blue Mountains Heritage 2016

	station master's residence, railway cottages, at grade rail crossing and overhead pedestrian footbridge)					
Physical condition and Archaeological potential	General condition fair – good. Recent upgrade works by RTA / RMS involved public access, footpaths and interpretation works. Former railway cottages – some archaeological potential (ref related RMS archaeological reports) Railway footbridge – Neglected. Appropriate maintenance and repairs required.					
Construction years	Start year	C1867	Finish year	ongoing	Circa	<input checked="" type="checkbox"/>
Modifications and dates	<p>Park and Reserves. Various</p> <p>Railway works noted below:</p> <ul style="list-style-type: none"> • 1868 -1877 Buss's Platform 'Woodford' (first located just west of the Buss's Inn at Academy Park) Ref 1869 watercolour Woodford Academy. Copy attached. • 1877-1880 Woodford #2 (relocated slightly west of original Buss's platform. Possibly just west of the Park Road bridge) • 1880-1902 Woodford #3 (relocated further east of original Buss's platform to rear of Memorial Park and fmr railway cottages. Rail crossing). Ref London Illustrated News woodblock print and coloured mural in existing Woodford Station. Copies attached. • 1902-present Woodford #4 (current station and platform built 1902. Co-incided with line duplication). Electrification of line 1957-58 and original Memorial Park footbridge replaced. Ref B&W photos attached. 					
Further comments	<p>Specific Issues Relating to the Railway Footbridge</p> <p>The railway footbridge has been an essential element in the successful establishment of the Woodford Memorial Park on the Western Road in 1919 and the Woodford Reserves (Wilson's Glen) to the south in 1933. As evident from the railway history noted above, Woodford's railway stations have early associations with Memorial Park. Of the four station sitings three have directly sited adjacent to the Park. The third station siting central to the reserve was relatively significant as NSW Railways also built the station master's residence and other railway cottages adjacent. There is likely to have been an at grade crossing historically at this location and importantly, this was the siting for the overhead pedestrian footbridge maintaining the east west connection post 1902 line duplication.</p> <p>The original footbridge constructed in 1920 was designed as an unusual A-frame timber structure and similar in design to footbridges in Hazelbrook and Coerwull. ARHS and SRA have original design drawings. The Mid Mountains Historical Society in their chronological timeline for the Woodford Railway History note that "1923 To connect the two portions of Woodford Memorial Park, a timber footbridge of novel design, resembling an 'A' was erected". The Coerwull footbridge still survives albeit at a new location as part of the Zig Zag Railway in Lithgow. The Woodford footbridge was located just east of the current footbridge location and evidence of its supporting fixings apparently remain on the western side of the rail corridor in the rock embankment. It is understood that in 1957, as part of the Western Line electrification project, safety screens and steel bracings modifications were carried out. According to an article in Australian Railway History in early 2016 the Woodford SRA plans and drawings include "a later annotation that the Woodford bridge was dismantled in 1956 (ARH March 2016).</p> <p>Other than the above references, there is little information available at this stage on the replacement footbridge, its design and construction date. The RailCorp s170 Register inventory sheet (SHI4801811) for the Woodford footbridge, prepared by Sydney Trains on 26/10/1999 notes that the existing footbridge is "a steel beam structure, up and over the main west tracks, at Memorial Park". The SHI inventory sheet does not include a history or significance assessment but the statement of significance notes that "the bridge is only one of three similar known to have been constructed in the 1950s..." The RailCorp inventory sheet notes that the other two similar footbridges were constructed at Woodford and a single one at Canley Vale. However, it appears that there might only have been</p>					

Draft Heritage Data Form

Blue Mountains Heritage 2016

	<p>one footbridge of this particular type built at Woodford (the existing footbridge) and the similar footbridge at Canley Vale has been demolished. Therefore the existing footbridge at Woodford is the only surviving example of its type.</p> <p>Following completion of an in-house Rail Heritage Asset Management Strategy in the period 2006-2009, Sydney Trains lodged a proposal to NSW Heritage Council to remove 120 items from their s170 Register, which included the footbridge at Woodford. The NSW Heritage Branch commented at the time that <i>"each inventory sheet includes a history, description statement of significance, assessed level of significance condition of the item, management issues and associated images and map"</i>. The Heritage Council report noted that the majority of the 120 items were <i>"footbridges of relatively recent construction that do not adequately meet the assessment criteria at the time of their initial listing"</i>.</p> <p>While the history and technical significance of the Woodford footbridge is unclear at this stage the s170 Register delisting may need to be updated to include</p> <ul style="list-style-type: none"> • The contextual significance of the footbridge in relation to Memorial Park and the important inter-connection to the Woodford Reserve (Wilson's Glen) to the south • The associational significance to the other former railway elements in the vicinity, such as the railway cottages, station master's house and original platform. The social significance of the footbridge to Woodford and its early establishment and growth. • The funding of the original footbridge by the community and Council is an important aspect of this significance. • The relationship, if any, to the siting of the footbridge and the original Woodford Railway Station (Buss' Platform) • The possibility of rarity aspects if the information in the Sydney Trains s170 inventory sheet is correct regarding it being "at the time of initial assessment" only one of three such footbridges, but today, possibly the only surviving example.
--	---

HISTORY	
Historical notes	<p>The village of Woodford gradually established itself in the vicinity of Surveyor George Evans' 1813 'Twenty Mile Hollow' and utilised initially by the European settlers as reserves for travelling stock but the area continued to be used into the 20th C for, among other things, supply of water for the steam trains. The earliest building is regarded as the 1830s Woodman's Inn on the site of the present day Woodford Academy. The property continued under successive owners such as Michael Hogan and William Buss to provide significant facilities, wayside inn and store for travellers west on the Bathurst Road. Prior to the adoption of the name Woodford the railway station opened in 1868 known as 'Buss's Platform'. The original platform was located west of the current railway station, closer to the current site of the rail footbridge.</p> <p>Through the late 19th and early 20th C the village of Woodford continued to attract well-connected interests from Sydney, as a mid Mountains retreat, including Sydney businessman such as Alfred Fairfax. Buss's Platform was renamed Woodford after Alfred Fairfax's new country residence, Woodford House. (Note Alfred Fairfax was born in Warwickshire, England and there is no place named Woodford in the area. It is not known why the name Woodford was chosen for his guesthouse (ref K. O'Neill and K. Goodlet 2016).</p> <p>By 1917 the village had approximately 250 permanent residents which included local identities as Gustavus Waterhouse, Thomas Thomas, Aubrey Murphy and Herbert Dakin of Holm Glen. The Blue Mountains Echo noted in February 1917 that this group formed a Progress Association the object being 'to formulate plans for enhancement of the District'. Waterhouse was elected President and he with others played a significant role in the early 20th C in Woodford. Gustavus John Waterhouse (1850-1929) was born in Tasmania, son of Rev Jabez Waterhouse and grandson of Rev John Waterhouse the first superintendent of the Wesleyan Mission in Tasmania. He was a mercantile businessman, broker, shipping agent and Sydney City Council and Waverley Council alderman. Mary</p>

Draft Heritage Data Form

Blue Mountains Heritage 2016

	<p>Jane Waterhouse was the daughter of financier Ebenezer Vickery, and an astute business woman, praised for her philanthropy and charitable works (ref K. O'Neill 2016). Their eldest son Gustavus Athol Waterhouse (1877-1950) became an eminent entomologist; the second son Eben Gowrie Waterhouse (1881-1977) was a professor of literature and languages at Sydney University and an authority of camellias. E.G Waterhouse's former home in Gordon is now the well-known historic house and garden 'Erydene'.</p> <p>In May 1905 Gustavus and his wife retired to Woodford and in 1911 built a property called Weroona. It was a significant home and although damaged by a bushfire in the 1940s, continued on as a boys home. The main house was destroyed by bushfire in 1957 with only a few outbuildings surviving. Gustavus and his wife made significant contributions to the community initially in Waverley and subsequently in Woodford, particularly through their activities with the Methodist Church as he was a layman and benefactor. A stained glass window in the heritage listed Woodford Methodist Church, which is opposite Woodford Memorial Park on the GWH, commemorates his and his wife's interest and generosity. Ken Goodlet in his history of Hazelbrook and Woodford notes that the formation of the Progress Association and its key objective was seen by the local press at the time "as marking an epoch on the history of this charming town".</p> <p>There are a number of inter-related elements to consider as part of the Memorial Park, including the Reserve itself, the Soldier's Memorial, the shelter shed, railway footbridge and Wilson Glen and walking tracks on the southern side of the railway footbridge. Other associated aspects are the railway use of the R55 Reserve with its former railway cottages and station master's residence, the site of the original railway station (Buss' Platform), the site of the original 1920s footbridge and the current railway station.</p> <p>Woodford Park Reserve</p> <p>After the establishment of the Progress Association, Ken Goodlet notes that the Woodford Group of the 'Blue Mountains Sights Reserves' commenced with most of their early attention going into the Woodford Memorial Park and much of the cost being paid as a loan by Gustavus Waterhouse.</p> <p>The Blue Mountains Echo in December 1917 notes that <i>"The Woodford Progress Association is making good progress. Many works to enhance the popularity of the district have been carried out and tracks have been laid out to the various sylvian retreats on the outskirts of the township. Arrangements are being made to convert the triangular block of land opposite Murphy's Store (Woodford Academy) into a children's playground and memorial park in honour of the lads who have served their King and country. The Association also intends petitioning the powers that be for the strip of Reserve running from the railway siding to the overhead bridge for the purpose of converting it into a recreation reserve. Mr G.J. Waterhouse, with customary generosity, has promised to give ornamental trees for planting in selected sights in the township, thus giving practical assistance in beatifying Woodford"</i> (BME 14/12/1916)</p> <p>In a subsequent Blue Mountains Echo article on 19th April 1918 notes that <i>"we are informed that the Progress Association has applied for the triangular corner piece of land in the main street, near the Station Master's residence for the purpose of erecting a memorial monument to our fallen comrades, and otherwise beautifying it"</i>. By July 1918 the Progress were awaiting a favourable response from the Railway Commissioners and <i>"were engaged in planting trees in the main street, and soon Woodford's boulevard should be an accomplished fact"</i>.</p> <p>The slightly differing alignments of the Western Road and the Western Railway through Woodford had created a long narrow Reserve (R55). In September 1919, part of this section of Reserve 55 was notified as a Reserve for Public Recreation. There appears to have been discussions between the Railway Department and Blue Mountains Shire Council at that time regarding the width of railway land impacted by the proposed Reserve and Western Road but with assistance from G.J Waterhouse Council refused appropriation of the land in favour of the Blue Mountains Sight Reserves and Progress Association. Progressive occupancy was given to the Trustees. This is indicative of the strength of</p>
--	---

Draft Heritage Data Form

Blue Mountains Heritage 2016

	<p>support the Woodford community were being given to establish their Parks and Reserves.</p> <p>In February 1926 the Watchman included a glowing description of Woodford with its 'special facilities for spending a quiet holiday'. The article noted Woodford Memorial Park opposite the two attractive churches on the Bathurst Road "...it bids fair to rival the garden at Blackheath. On the summit of the park, under the Memorial structure are seats, and from there, as far as the eye can reach, an uninterrupted view east, west and north over the mountains. Across the railway line and connected by an overhead bridge lies Woodford Recreation Reserve..." (Watchman 4/2/26) In 1927 the Trustees had organised other facilities for the Park and the Blue Mountains Echo noted that "<i>Memorial Park, at Woodford, is to have its shelter shed and Mr G. J. Waterhouse invites tenders for the work...</i>" (BME 10/6/16)</p> <p>Woodford Railway Footbridge c1920</p> <p>The Woodford Memorial Park footbridge was officially opened after the local community had raised part of the funds needed for its construction. The engineering drawing for the bridge was done in May 1920 (ARH March 2016). The Hazelbrook footbridge, drawn at the same time as Woodford's bridge and of a similar design (located near the current school footbridge) was not installed until 1923 when local resident Joseph Forde, finally succeeded in mobilising support for the bridge - the shire council paying half the £350, and the community the rest. The importance of the new footbridge to the Woodford community and the well-attended public opening is evident in the detailed article in the Blue Mountains Echo on 3rd December 1920.</p> <p><i>"Woodford was on fete last Saturday, the occasion being the official opening ceremony of the new overhead bridge leading from the main road to the reserve. Some 18 months ago it was suggested that an offer of £75 be made to the Railway Commissioners to construct this bridge, a resident, undertaking to contribute £50 provided £25 was raised. The Commissioners agreed to the proposal, and the money was readily forthcoming.</i></p> <p><i>Mr. James Dooloy, Chief Secretary, had promised to perform the ceremony, but was detained by urgent business. Mr. J. C., L, Fitzpatrick, M.L.A. however, wrote saying he would be present, and the committee decided to request him to do the honors. Just at the appointed time (3 p.m.) for the business to commence a telegram was received, saying Capt. Dunn, Minister for Agriculture, would arrive about 4 p.m., but it was decided that, as a large number of residents was present and the weather was exceedingly sunny, to adhere to the programme. Mr. G. Waterhouse (president of the Progress Association and chairman of the Parks Trust) presided, and after giving, a history of the movement, introduced Mr Fitzpatrick to the gathering.</i></p> <p><i>The member for Bathurst congratulated the residents on the success of their undertaking, He then cut the ribbon in proper style, and declared the bridge open for traffic. A hearty vote of thanks, proposed by Mr. J Emmerson and seconded by Councillor P. Wilson, to Mr. Fitzpatrick, was carried unanimously, as also a similar appreciation accorded to the chairman. The company then inspected the bridge, which was gaily decorated with bunting, and proceeded to the reserve, where afternoon tea was indulged in.</i></p> <p><i>Amongst others present- were Councillors P. Wilson, T, Savage, Dr. Wilson, Messrs. Thomas; Watson, Young, J. Vickery, and, at a late stage, Captain Dunn. Apologies were tendered for the absence of Mr. E. K, - Bowden, M.H.R., and Capt. H. DakIn, hon. Secretary of the Progress Association.</i></p> <p><i>The children had a happy time, about 70 being presented each with a bag of goodies, and notwithstanding the heat, wound up the proceedings with races, etc. The refreshments, as usual, were in charge of the ladies, headed by Mrs. H. W. Wilson, and great credit is due to them for their excellent attention to the demands of thirsty. The bridge, although 'neither a work of art nor a thing of beauty,' will be very serviceable". (BME 3/12/1920)opening</i></p> <p>The Public Reserve and walking tracks that the bridge provided pedestrian access to on the southern side of the rail line appears to have been gazetted as a 'Public Reserve' as early as 1880. (ref 1906</p>
--	--

Draft Heritage Data Form

Blue Mountains Heritage 2016

	<p>parish map - Linden Parish, County Cook). "R90 for public recreation, Aug '80" (1880). At this time the Woodford Reserve and Werona Park were part of the extensive private grounds of 'Woodford House' and from 1907 the school grounds of the Woodford Academy. This 'Recreation Reserve' on the southside became known as Wilson's Glen when additional land was donated to this original Recreational Reserve by a local business man in the 1930's. The following article from the Sydney Morning Herald illustrates the ongoing local interest, energy and generosity of some local community members in ensuring that the wider community have access to parks and reserves into the future.</p> <p>MOUNTAINS RESERVE Dedicated as Memorial. Sydney Morning Herald 30 May 1933 <i>"The memorial building at the entrance to the Wilson Glen, of four acres, given to the Blue Mountains Shire by Mr Thomas M Wilson, of Woodford, was officially opened on Saturday afternoon. The building was dedicated to the memory of Mrs Wilson. Among those present were Sir Edgeworth and Lady David, Mr J F Coates, M L C, Mr and Mrs John Garlick, Mr. Frank Walker (Royal Historical Society), Alderman Freeland (Mayor of Katoomba), the Rev. Mr. Todd and Mrs Todd, Rev C P Viney, Councillor Percy Wilson (president of the Blue Mountains Shire), and Mrs Wilson. Mrs Grace, wife of Councillor H C. Grace, performed the opening ceremony and cut the ribbon. Under the building is a plate bearing the following inscription - Blue Mountains Shire Council, Wilson Glen Dedicated by Thomas M Wilson in memory of his wife 24th August 1932. The Glen is near the Woodford railway station, has two shelter sheds named "Banksia" and "Erica," and has a pure water supply running from a metal lion's head and named "Tealby Spa " Councillor H C Grace said the four acres and the memorial had been given by Mr Wilson, and that the representatives of the late Mr R Pausey had given several adjoining blocks, and another block would be secured making a reserve of 40 acres, which would be controlled by the Blue Mountains Shire Council, and remain the property of the people forever." (SMH 30/5/1933)</i></p> <p>Woodford Park Memorial c1922 Within two years of the establishment of the Park and the construction of the footbridge the Woodford Reserves Trust had organised design and construction of a war memorial. The Blue Mountains Echo on 16th September 1921 noted that <i>"tenders have been accepted in connection with the soldier's memorial, together with the ornamental fence and entrance to the memorial park, is to be started at once. Much praise is due to G.J. Waterhouse, president of the Reserves and Sites Trust, together with his co-workers, for the energy displayed. Woodford residents are fortunate in the possession of a real live body of sites' workers. The work when finished should be equal to any on the Hills"</i> (BME 16/9/1921)</p> <p>The opening of Woodford's War Memorial on ANZAC Day in 1922 as well as the later footbridge gives an insight into the social status of a number of the members of the Woodford community and perhaps explains how Woodford was successful in securing these major improvements to the village. The following article from the Blue Mountains Echo illustrates the strong public sentiment associated with the Park.</p> <p>"Woodford Memorial In Memory of the Brave UNVEILING CEREMONY.' Blue Mountain Echo 5th May 1922 <i>"The people of Woodford are justly proud of the manner in which they have transformed that stretch of waste land between the Great Western road and the railway, into a public reserve, the enclosure, with its fine concrete wall, being indeed a striking feature on the main artery to the west. Some day, when the full scheme of beautification and improvement is realised, Woodford will possess a beauty spot that will be a credit to the district and a joy to the numberless tourists who motor by. On it they have erected a memorial to the diggers who enlisted from the district, and for the purpose of unveiling the memorial chose Anzac Day, Professor Sir Edgeworth David being asked to perform the ceremony. Notwithstanding that the weather was misty and uncomfortable, the people turned out in force. By doing so they not only paid fitting tribute to the memory of the day, but proved the existence of a proper civic spirit. The memorial, which is of white free stone, bearing marble tablets containing an inscription and bearing the names of Woodford enlistments, is surmounted by a machinegun, the</i></p>
--	--

Draft Heritage Data Form

Blue Mountains Heritage 2016

	<p><i>whole being contained in a pavilion.</i></p> <p><i>Outside the interest that naturally attaches to the names of those who saw, and did their duty, aye, and died for it, the machine gun is in itself a testimony to the prowess and devotion not only of the A.I.F. generally, but is doubly interesting from the fact that one of Woodford's diggers was present at the battle at which it was captured. The ceremony, owing largely to the inclemency of the weather, was curtailed to some extent, Sir Edgeworth David performing it with due fittingness and solemnity...Later an adjournment was made to the Methodist Hall, where speeches apropos of the day and occasion were delivered by Sir Edgeworth David, Mr. E K. Bowden, M.H.R., and others. An inscription also points to the fact that the machine gun was captured on the Somme on August 8 1918."</i></p> <p>The photograph of the opening of the War Memorial shows Percy Wilson (Hazelbrook resident, councillor & Shire President in the 1920s and 1930s and Sir Edgeworth David – a war veteran and local celebrity who had successfully undertaken an expedition to the Antarctic South Pole in 1908/09 (https://en.wikipedia.org/wiki/Edgeworth_David)(Photo courtesy Jill Lyons Percy Wilson's grand daughter). Hon Eric Bowden Federal Member, also mentioned in the both articles, was a solicitor and federal parliamentarian. His home was based in Sydney but he also owned property in Woodford and his 3 sons attended Woodford Academy. His daughter Isobel Bowden OAM, a botanical illustrator and conservationist became a founding member of the Blue Mountains Conservation Society. Eric Bowden was elected to federal parliament in 1919, and served as Minister for Defence from 1923-1925. It was perhaps his influence, that also helped secure support for the footbridge in Woodford's Memorial Park in 1920.</p> <p>Other Elements - Railway Cottages c1912</p> <p>The eastern end of the Memorial Gardens abuts land currently owned and managed by RMS (70A) and RailCorp (70). Both lots are included as part of WD010 Memorial Gardens in Schedule x of the 2015 LEP. The lots are the site of two former SRA residences; c1912 Station Master's Residence, c1912 railway cottage and significant magnolia tree. The original railway station (c1868 Buss's Platform) on the main railway line sat close to the location of the later cottages. Both buildings now demolished but their sites interpreted by RMS after recent GWH upgrade works.</p> <p>Other Elements – Rock Engravings</p> <p>19th C rock engravings.</p>
--	--

THEMES		
National historical theme	State historical theme	Local theme
Governing	Defence	Soldier's Memorial
Transport	Railways	Railway residences
Culture	Leisure	Reserves and gardens

APPLICATION OF CRITERIA	
Historical significance SHR criteria (a)	<p>The Woodford Memorial Park group has historical significance because:</p> <ul style="list-style-type: none"> • The establishment of the Reserve and its key elements was part of the early growth of the village and community of Woodford. • The formation of the Reserve, Soldier's Memorial and Gardens was an important step in attracting tourism to the Mountains as illustrated by periodicals and articles of the period. • The Memorial Park was an important link in the wider establishment of the appreciation of the natural reserves and walking track system developed through the early 20th C. The Memorial Park connected the settled areas of the village on the northern side of the Bathurst Road and Railway with reserves such as Wilson's Glen and its walking tracks on the southern side of the Railway line. The railway footbridge is an important illustration of this

Draft Heritage Data Form

Blue Mountains Heritage 2016

	<p>connection and important enough to be funded by the local community and Council. The alignment of the main entrance to the Park and the footbridge illustrate the integral nature of the footbridge in the park design and use.</p> <ul style="list-style-type: none"> The railway elements including the station master's residence, cottage, railway footbridge and site of original Woodford railway station are significant inter-related aspects in the history of Woodford and its association with the railway.
Historical association significance SHR criteria (b)	<p>The Woodford Memorial Park group has historical association significance because:</p> <ul style="list-style-type: none"> The local community groups, such as the Woodford Progress Association and the Blue Mountains Sights(sic) and Reserves group, who pushed for and achieved improved facilities and 'beautification' of Woodford were founded and guided by affluent and well-connected residents who were well-known Sydney businessmen or community figures. These included Gustavus Waterhouse, Hon Eric Bowden Federal Member, Sir Edgeworth David and Shire President Percy Wilson. In particular, Gustavus Waterhouse appears to have been generous with his time and financial assistance. Also, through his involvement and support of the Methodist Church in Sydney and particularly Woodford there is an indirect association to the Methodist Church and Parsonage opposite the Memorial Gardens and their home close by at Weroona. The Waterhouse family have a wider significance to the Sydney region. The creation of the Soldier's Memorial within the Park also gives a wider association to those who are commemorated through the Memorial.
Aesthetic significance SHR criteria (c)	<p>The Woodford Memorial Park group has aesthetic significance because:</p> <ul style="list-style-type: none"> The park was recognised in the early 20th C tourist literature as an attractive wayside stop enroute through the Mountains. The gardens were said at that time to rival those of Blackheath. Today the park has been compromised in its size by highway widening and access difficulties but it is still seen as an important landscaped park with historic associations on the Great Western Highway. The Soldier's Memorial and Shelter structure are well considered early 20th C built forms with the Memorial particular well sited on its prominent rocky outcrop. The rustic stone shelter built in 1932 on the southern side of the railway line, at the head of the Wilson Glen walking track, was apparently designed to relate aesthetically to the Soldier's Memorial within the Park reinforcing the linked relationship of Park and the Reserve, with the Park seen as the entrance to the Reserve and Wilson's Glen via the railway footbridge. The later stone bus shelter at the railway station similarly relates to this design aesthetic and group.
Social significance SHR criteria (d)	<p>The Woodford Memorial Park group has social significance because:</p> <ul style="list-style-type: none"> The Memorial Park and its relationship to the Reserve to the south was regarded by the of local community as having high significance...it was their first project after establishment of the Woodford Progress Association and the Blue Mountains Sights and Reserves group. The siting of the Soldier's Memorial within the Park is indicative of the social status of the Park in the minds of the local community. The opening of the Park and the Soldier's Memorial were important ceremonies well-attended by significant local and State figures. Similarly, the opening of Wilson's Glen reserve and walking track was one of only 11 tracks that had formal opening ceremonies. These aspects illustrate the social significance of the Park and its inter-related Reserve to the south. The recent strength of community feeling regarding the associated highway upgrade works and its impact on the Park together with the threatened loss of the connection railway footbridge is also indicative of the high social significance of the Park and Wilson's Glen to the local community. This was reinforced in a 2016 community petition calling for retention and repair of the historic pedestrian footbridge, supported by many local and state significant persons including the State Member.
Technical/Research	<p>The Woodford Memorial Park group has technical significance because:</p> <ul style="list-style-type: none"> There is some archaeological potential to the former railway sites, buildings and railway

Draft Heritage Data Form

Blue Mountains Heritage 2016

significance SHR criteria (e)	<p>station.</p> <ul style="list-style-type: none"> The existing footbridge appears to be a typical mid 20th C steel-framed structure but according to SRA may now be rare in the region. Further investigation has revealed that other examples of this type of footbridge have been demolished and this existing footbridge is the only surviving example of its type.
Rarity SHR criteria (f)	The railway footbridge appears to now be a relatively rare structure with the loss of 2 other only remaining examples.
Representativeness SHR criteria (g)	The Woodford Memorial Park group is representative of many civic parks and gardens in the Blue Mountains.
Integrity	The Woodford Memorial Park group is moderately intact overall with many of its original built elements either intact, replaced with a similar element or its archaeology interpreted. According to advice from RailCorp / Sydney Trains the condition of the footbridge is poor (note condition not reviewed for this assessment).

HERITAGE LISTINGS

Heritage listing/s	BMCC LEP 2005 and subsequent LEP 2015 - Local ID WD010 (note not including footbridge)
---------------------------	--

INFORMATION SOURCES

Include conservation and/or management plans and other heritage studies.

Type	Author/Client	Title	Year	Repository
Newspaper	Blue Mountains Echo 9/2/1917, 10/8/1917, 4/1/1918	Various related articles	1917	Trove
Receipt Book	Woodford Group of Blue Mountains Sights Reserves		1921-1925	BMCC Archives?
Photo		Memorial Gardens and Methodist Parsonage Church, Woodford postcards	C1927	State Library Archives
Report	AHMS, Sophie Puller	70, 70A GWH & The Adjacent Memorial Park, Archaeological & Heritage Impact Assessment	Oct 2006	RTA
Written	Ken Goodlet	Hazelbrook & Woodford: A Story of Two Blue Mountains Towns	2006	
Report	AHMS, Sophie Puller	70, 70A GWH & The Adjacent Memorial Park, Heritage Interpretation Strategy	Oct 2007	RTA
Report	RTA Environmental Technology	Archival Record of Heritage Item at 70A GWH, Woodford	Feb 2007	RTA
Report	Integrated Design Associates	Woodford Memorial Park for Highway Adjustments	Jun 2014	
Report	Stedinger Associates	Engraving Memorial park, Woodford	Oct 2014	RMS

Draft Heritage Data Form

Blue Mountains Heritage 2016

Article	BMACHO	Heritage Newsletter Special Ed#2	Mar 2016	
Article	Ken Kershaw and Bill Phippen	Notes on Coerwull, Hazelbrook and Woodford Footbridges	March 2016	ARHS
Website	Sydney Aldermen	Gustavus John Waterhouse		www.sydneyaldermen.com/alderman/gustavus-waterhouse
Public Submission	Various including BMACHO, National Trust of Australia, Kate O'Neill and Ken Goodlet	2017 Heritage Review Submissions including supplementary historical material and detailed clarifications	2017	BMCC

ABORIGINAL HERITAGE

Acknowledgement	<p>The Blue Mountains Local Government Area is within the Country of the Darug and Gundungurra peoples and Blue Mountains City Council respects their cultural heritage and deep ongoing connection to this Country.</p> <p>This inventory sheet documents the European occupation of the site only, and the heritage significance of the place in this context (assessed against the heritage criteria set by the NSW Heritage Council).</p> <p>This does not therefore, represent a complete history of the place, or represent the perspectives of Darug and Gundungurra Traditional Owners in relation to the colonial impacts on this site. Consultation with Traditional Owners and other Aboriginal stakeholders is required, before Aboriginal Cultural Heritage that may be associated with this place, can be recorded.</p>
------------------------	---

RECOMMENDATIONS

Recommendations	<ul style="list-style-type: none"> • Further research to establish the early of original plantings within the gardens. • Retention of the railway footbridge and funding made available for appropriate repairs and maintenance. While the footbridge may originally have been typical of many mid 20th C steel-framed structures it now appears to be the only surviving example of its type. However, the footbridge has been neglected and suffered some insensitive repairs over the years and may not be highly intact. It is considered that while the existing fabric may not have a high level of significance in its present condition there is scope to repair and restore the structure to recover some of its original character and fabric and retain the interconnectedness of the Park and the Reserve to the south which is also a significant aspect in its overall significance locally. • Further research to clarify the siting of Buss's Platform and possibly its interpretation within the Park. • Interpretation within the Park in recognition of the positive efforts of the local community in the early 20th C highlighting the input of key individuals at the time. • The listing curtilage be extended west to include original footpath and carved stone steps to Railway Parade.
------------------------	--

SOURCE OF THIS INFORMATION

Name of study or report	Blue Mountains Heritage Study	Year of study or report	1983
Item number in study or report	WD010		
Author of study or	Croft & Associates Pty Ltd & Meredith Walker		

Draft Heritage Data Form

Blue Mountains Heritage 2016

report			
Inspected by			
NSW Heritage Manual guidelines used?	Yes <input checked="" type="checkbox"/>	No <input type="checkbox"/>	
This form completed by		Date	

SOURCE OF THIS INFORMATION			
Name of study or report	Blue Mountains Heritage Study	Year of study or report	1992
Item number in study or report	WD010		
Author of study or report	Tropman and Tropman		
Inspected by			
NSW Heritage Manual guidelines used?	Yes <input checked="" type="checkbox"/>	No <input type="checkbox"/>	
This form completed by		Date	28/10/1999

SOURCE OF THIS INFORMATION			
Name of study or report	Blue Mountains Heritage Register Review	Year of study or report	1999
Item number in study or report	WD010		
Author of study or report	Jack, R.I. for University of Sydney		
Inspected by	RIJ & PH		
NSW Heritage Manual guidelines used?	Yes <input checked="" type="checkbox"/>	No <input type="checkbox"/>	
This form completed by		Date	

SOURCE OF THIS INFORMATION			
Name of study or report	Technical Audit BM Heritage Register	Year of study or report	2008
Item number in study or report	WD010		
Author of study or report	BMCC		
Inspected by	City Planning Branch		
NSW Heritage Manual guidelines used?	Yes <input checked="" type="checkbox"/>	No <input type="checkbox"/>	
This form completed by		Date	30/3/2009

SOURCE OF THIS INFORMATION			
Name of study or report	2017 Heritage Review	Year of study or report	2017

Draft Heritage Data Form

Blue Mountains Heritage 2016

Item number in study or report	WD010		
Author of study or report	BMCC		
Inspected by	Land Use Management Branch		
NSW Heritage Manual guidelines used?	Yes <input checked="" type="checkbox"/>	No <input type="checkbox"/>	
This form completed by	Christo Aitken	Date	6/2016 updated 8/2017

Draft Heritage Data Form

Blue Mountains Heritage 2016

IMAGES

Image caption	Postcard view showing Woodford Memorial Park c1920 with original footbridge in background. It is important to note that the pedestrian footbridge and the main entrance to the Park align illustrating the integral nature of the footbridge in the overall park design and use.				
Image year	C1920	Image by	Broadhurst. Ref note on postcard.	Image copyright holder	Broadhurst?

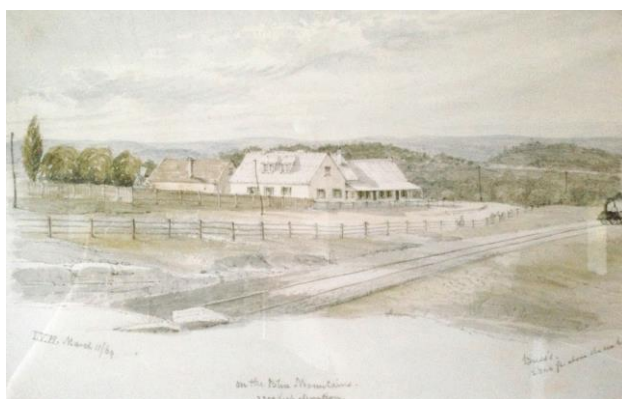


Draft Heritage Data Form

Blue Mountains Heritage 2016

IMAGES

Image caption	Woodford's early railway station sites				
Image year	1869 and 1889	Image by	State Library	Image copyright holder	State Library



Woodford's first railway station site on the northern edge of Memorial Park opposite Buss's Inn / Woodford Academy



Woodford's third railway station site 1880-1902 on the western edge of Memorial Park close to the future site of the overhead pedestrian footbridge. London Illustrated News "Woodford in the Eighties – Christmas in Australia: Stopping the Train to go to a Christmas Party. Shows two women with luggage signalling an oncoming train to stop at Woodford Station. From negative in Mitchell Library Frank Walker Collection ON 150, Item 1607)

Draft Heritage Data Form

Blue Mountains Heritage 2016

IMAGES

Image caption	War Memorial				
Image year	2016	Image by	BMACHO	Image copyright holder	BMACHO



Draft Heritage Data Form

Blue Mountains Heritage 2016

IMAGES

Image caption	Recent interpretative work of original railway cottage sites within Memorial Park				
Image year	2016	Image by	BMACHO	Image copyright holder	BMACHO



Draft Heritage Data Form

Blue Mountains Heritage 2016

IMAGES

Image caption	Memorial park approach from the south. Existing c1950s footbridge.				
Image year	2016	Image by	BMACHO	Image copyright holder	BMACHO



Draft Heritage Data Form

Blue Mountains Heritage 2016

IMAGES

Image caption	Stone steps off Railway Parade				
Image year	2016	Image by	BMACHO	Image copyright holder	BMACHO

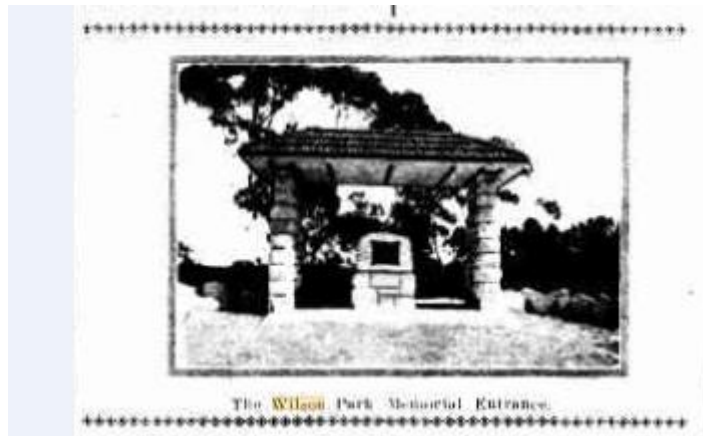


Draft Heritage Data Form

Blue Mountains Heritage 2016

IMAGES

Image caption	Extract from Katoomba Daily June 1933 showing the entrance to Wilson Park / Glen Reserve on the southern side of Memorial Park with a continuity of character of built forms.				
Image year	1933	Image by	Katoomba Daily	Image copyright holder	Katoomba Daily



2016 view from Railway Parade

Draft Heritage Data Form

Blue Mountains Heritage 2016

IMAGES

Image caption	Extract c1943 aerial view of Woodford Memorial Park showing the original footbridge and its strategic alignment with Memorial Park entrance on the GWH and walking track to Wilson Glen. The image also shows the Soldier's Memorial, Railway Cottages and Park Shelter.				
Image year	1943	Image by	LPI SixMaps	Image copyright holder	LPI

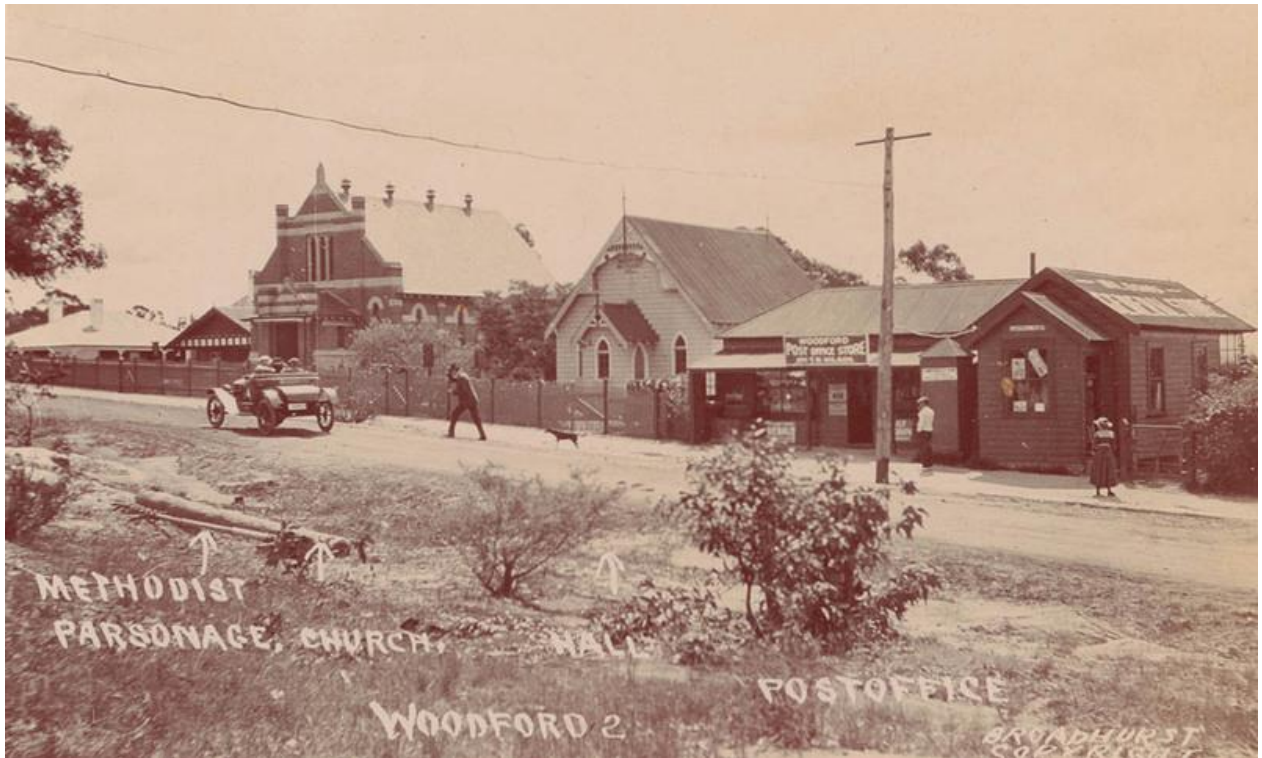


Draft Heritage Data Form

Blue Mountains Heritage 2016

IMAGES

Image caption	Postcard view c1919? From Memorial park looking north towards the Western Road. The image illustrates the proximity of the Methodist Church group and perhaps explains one aspect of the involvement of the Waterhouse family in the improvements to Woodford in the early 1900s.				
Image year	C1919?	Image by	Broadhurst. Ref note on postcard.	Image copyright holder	Broadhurst?



Draft Heritage Data Form

Blue Mountains Heritage 2016

IMAGES - 1 per page

Image caption	Opening of the Woodford War Memorial 5 th May 1922. The attached photo of the opening of the War Memorial shows Percy Wilson (Hazelbrook resident, councillor & Shire President in the 1920s and 1930s) is standing in the bowler hat on the left. Sir Edgeworth David – a war veteran and local celebrity who had successfully undertaken an expedition to the Antarctic South Pole in 1908/09 is standing in the centre. Gustavus Waterhouse, President of the Woodford Progress Association and Woodford Reserves Trust also in the centre. (Photo courtesy Jill Lyons Percy Wilson's grand daughter).				
Image year	1922	Image by	Uncertain	Image copyright holder	Wilson family



Draft Heritage Data Form

Blue Mountains Heritage 2016

IMAGES

Image caption	Curtilage of Woodford Memorial Park Group (GIS Mapping to formalise)				
Image year	8/2017	Image by	BMCC	Image copyright holder	BMCC